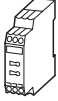
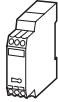
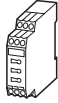


ETR 4 Electronic Timing Relays

	IEC rated operational current I_e at AC-15 220V 230V 240V	UL/CSA Pilot Duty Rating	Time range	24 – 240 V, 50/60 Hz, AC 24 – 240 V, DC Type Article No.	Price see price list
A					
Timing relay, ON-delayed					
	3	B 300	0,05 – 1 s 0,15 – 3 s 0,5 – 10 s 1,5 – 30 s 5 – 100 s 15 – 300 s 1,5 – 30 min 15 – 300 min 1,5 – 30 h 5 – 100 h	ETR4-11-A 031882	
Star-delta timing relay					
	3	B 300	3 – 60 s	ETR4-51-A 031884	
Multi-function relay					
	3	B 300	0,05 – 1 s 0,15 – 3 s 0,5 – 10 s 1,5 – 30 s 5 – 100 s 15 – 300 s 1,5 – 30 min 15 – 300 min 1,5 – 30 h 5 – 100 h	ETR4-69-A 031891	

The Entire Family of ETR 4 Timing Relays Feature Many Advantages:

- Micro-processor controlled for high repeat accuracy
- Very high noise immunity, designed for industrial application
- LED's to signal state of output contacts and running status
- Easy setting of timing ranges and functions
- Simple to install and wire
- One device covers all AC and DC voltages across a broad range: Simplifies and minimizes inventories

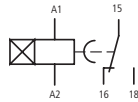
ETR 4 Electronic Timing Relays

UL / CSA / IEC / CE

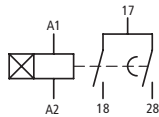
Industrial Control Relays,
Electronic Timing Relays

Available function ¹⁾ Terminal markings Available function ¹⁾ Terminal markings

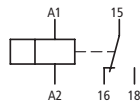
11



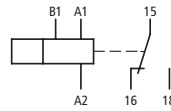
51



11, 21, 42, 81



12, 16, 22, 82



Notes

¹⁾ ETR 4-11 and ETR 4-51 supplied with stated function as standard

Notes

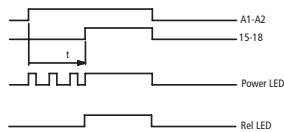
One Device for All Voltage Ratings !
The ETR 4 timing relays operate reliably when actuated by DC and AC voltage levels in the range indicated in the table below. There is no need to specify 'coil' voltages or stock coils.

Type suffix	Actuating voltage printed on unit	
	V DC	V AC
-A	24 – 240	24 – 240, 50/60 Hz
-A	16,8 – 288	20,4 – 264

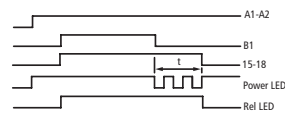
Allowable cable length:	Connection to B1
Unshielded conductors AWG 14 ... 18	250 m
Conductors in same conduit or cable duct as 50/60 Hz power conductors	50 m

Accessories	Page
Panel mount adapter	02/026

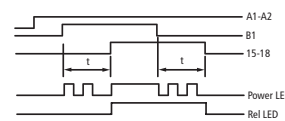
11 ON-delayed



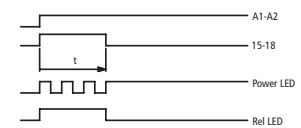
12 OFF-delayed



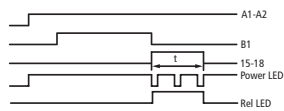
16 ON and OFF- delayed



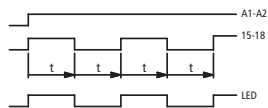
21 Fleeting contact on energization



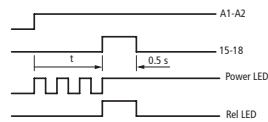
22 Fleeting contact on de-energization



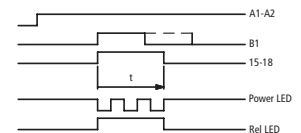
42 Flashing



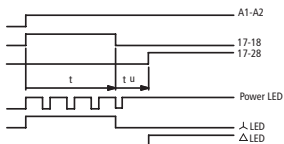
81 Pulse generating



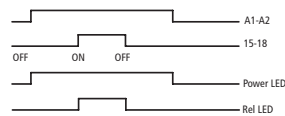
82 Pulse shaping



51 Star-delta



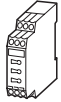
ON-OFF function



ETR 4 Electronic Timing Relays

UL / CSA / IEC / CE

IEC rated operational current I_e at AC-15 220V 230V 240V	UL/CSA Pilot Duty Rating	Time range	24 – 240 V, 50/60 Hz, AC 24 – 240 V, DC Type Article No.	Price see price list
A				
Multi-function relay				
With two changeover contacts and connection for remote potentiometer. Can be converted to two timed contacts or one non-delayed contact and one timed contact.				
3	B 300	0,05 – 1 s 0,15 – 3 s 0,5 – 10 s 1,5 – 30 s 5 – 100 s 15 – 300 s 1,5 – 30 min 15 – 300 min 1,5 – 30 h 5 – 100 h	ETR4-70-A 031888	



Notes

One Device for All Voltage Ratings !
The ETR 4 timing relays operate reliably when actuated by DC and AC voltage levels in the range indicated in the table below. There is no need to specify 'coil' voltages or stock coils.

Type suffix	Actuating voltage printed on unit	
	V DC	V AC
-A	24 – 240	24 – 240, 50/60 Hz
Voltage tolerance range		
	V DC	V AC
	16.8 – 288	20.4 – 264

Allowable cable lengths:

	Connection to B1 Z1/Z2
Unshielded conductors AWG 14 ... 18	250 m
Conductors in same conduit or cable duct as 50/60Hz power conductors	50 m

Accessories	Page
Panel mount adapter	02/026
Remote potentiometer	02/026

ETR 4 Electronic Timing Relays

UL / CSA / IEC / CE

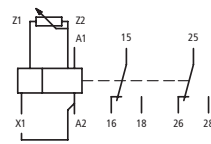
A2/X1 linked

→ 2 timed contacts

Available functions

11, 21, 42, 81
ON – OFF

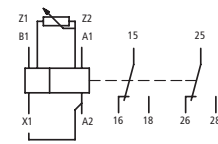
Connection diagrams



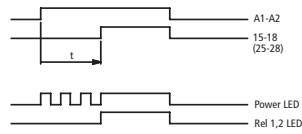
Available functions

12, 16, 22, 82
ON – OFF

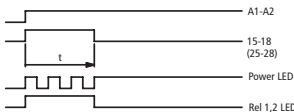
Connection diagrams



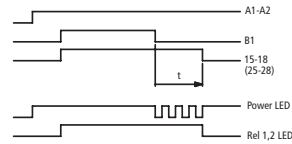
11 ON-delayed



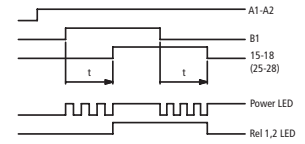
21 Fleeting contact on energization



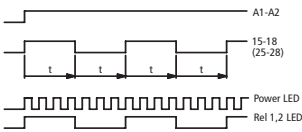
12 OFF-delayed



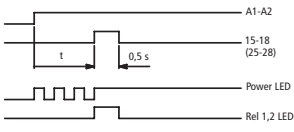
16 ON and OFF-delayed



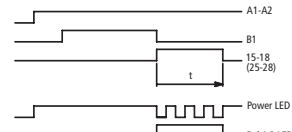
42 Flashing



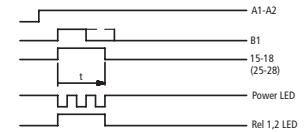
81 Pulse generating



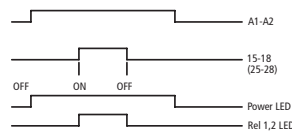
22 Fleeting contact on de-energization



82 Pulse shaping



ON-OFF function



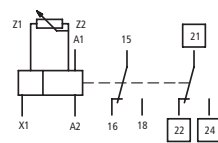
A2/X1 not linked

→ 1 non-delayed and 1 timed contact

Available functions

11, 21, 42, 81
ON – OFF

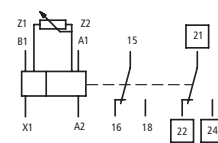
Connection diagrams



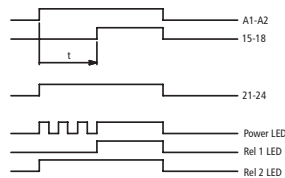
Available functions

12, 16, 22, 82
ON – OFF

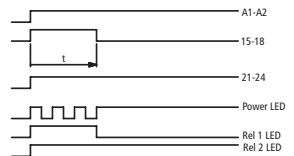
Connection diagrams



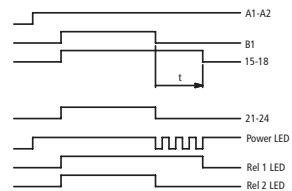
11 ON-delayed



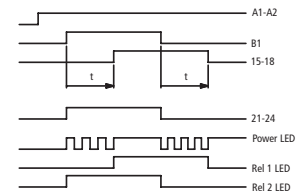
21 Fleeting contact on energization



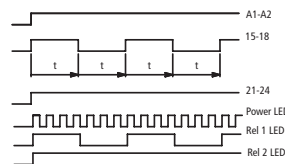
12 OFF-delayed



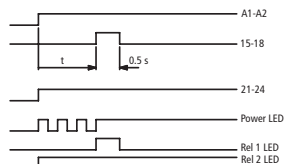
16 ON and OFF-delayed



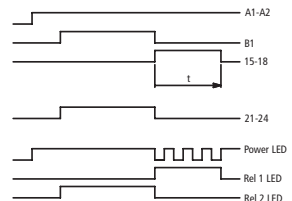
42 Flashing



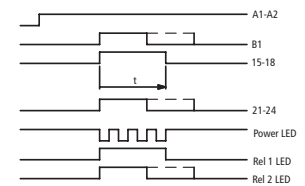
81 Pulse generating



22 Fleeting contact on de-energization



82 Pulse shaping



ON-OFF function

